



Peoples' Friendship
University of Russia

The Results of Using Bioabsorbable Scaffolds In Patients With Diabetes Mellitus

Maximkin D.A. MD, PhD, Associated professor

Shugushev Z.Kh., MD , Professor

Chepurnoy F.G. MD, Kolzhetsova Y.S. MD,

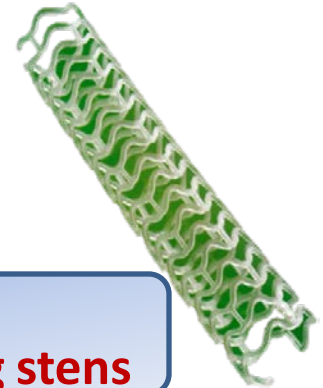
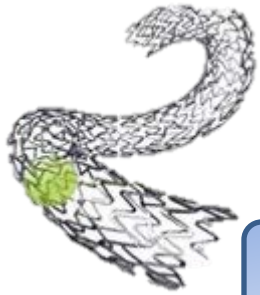
Faibushevich A.G. MD. PhD, Associated professor

Peoples' Friendship University of Russia, Moscow

Central Clinical Hospital № 2 Russian Railways, Moscow

danmed@bk.ru

Aim: To evaluate the efficacy of endovascular intervention in patients with diabetes mellitus, operated using bioabsorbable scaffold and IIIrd generation drug eluting stents.

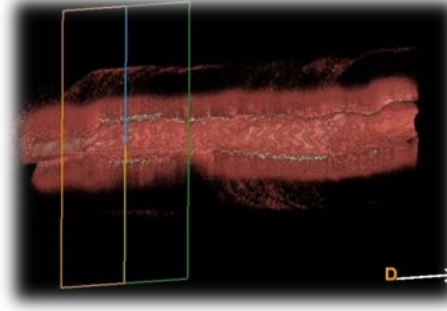


n=125

n=57
BVS «ABSORB»

n=68
Everolimus-eluting stens

OCT-control



Inclusion criteria:

- primary disease of coronary arteries;
- angina Class II&III(CCS);
- myocardial ischemia confirmed by stress tests;
- diabetes mellitus;
- stenosis of middle or distal segment of magistral arteries $\geq 70\%$ confirmed by angiography
- no CABG & PCI in history.

Exclusion criteria:

- acute coronary syndrome;
- excessive tortuosity of artery;
- pronounced calcification of coronary artery;
- bifurcation lesions;
- Left main coronary artery diseases .



Average age - 57±2,4 years

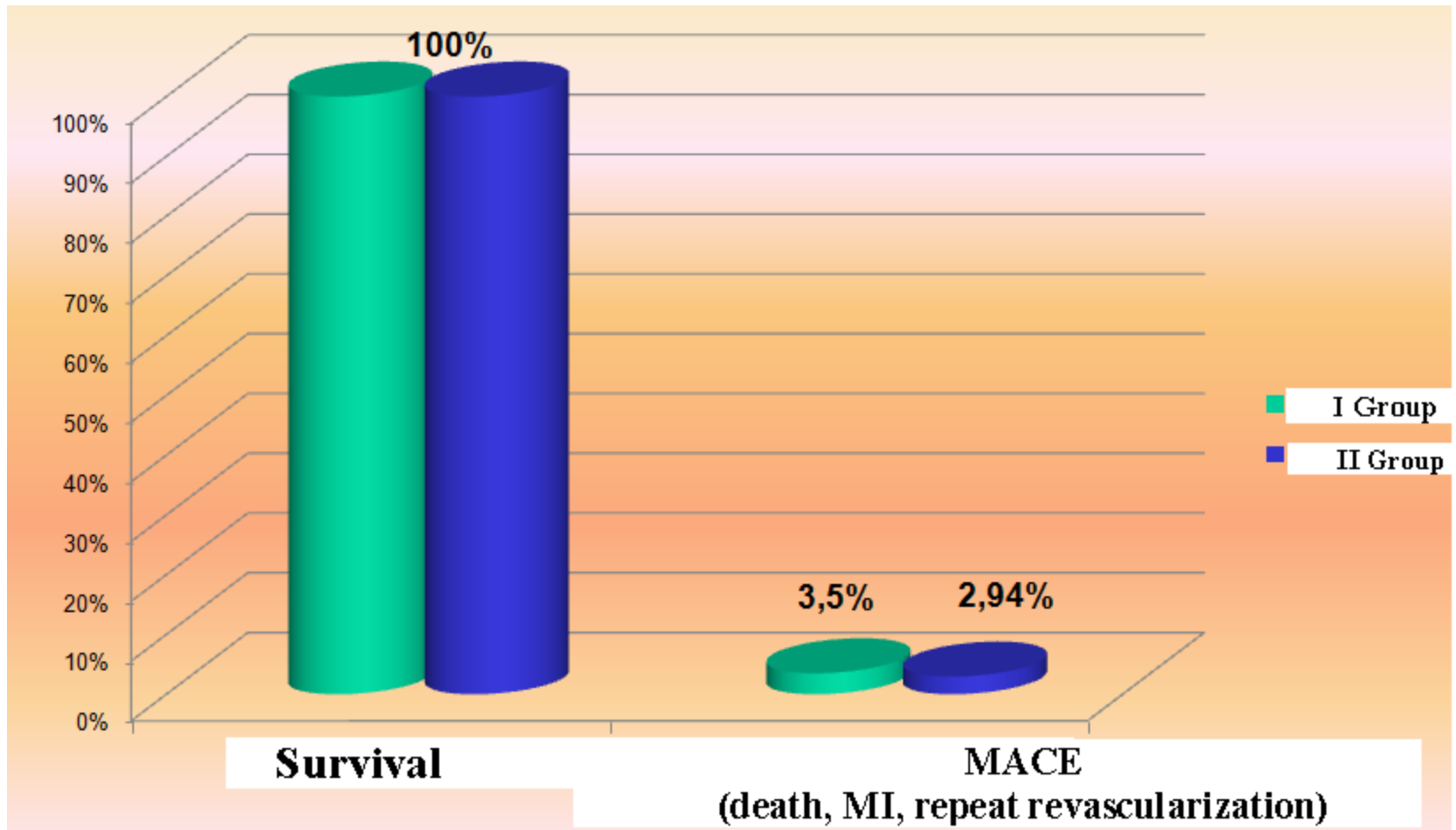
<i>Angina III-IV</i>	47 (37,6%)
<i>Silent Ischemia</i>	78 (62,4%)
<i>MI in history</i>	58 (46,4%)
<i>Heart Failure I-III</i>	125 (100%)
<i>Diabetes Mellitus type II</i>	125 (100%)
<i>Hypertension</i>	125 (100%)
<i>Smoking</i>	98 (78,4%)
<i>Hyperlipidemia</i>	52 (41,6%)
<i>Obesity</i>	54 (43,2%)
<i>1-2 vessel disease</i>	77 (61,6%)
<i>Multivessel disease</i>	48 (38,4%)
<i>LAD</i>	58 (46,4%)
<i>Cx</i>	37 (29,6%)
<i>RCA</i>	30 (24,0%)
<i>Average lesion lengths</i>	23±1,26mm
<i>Average vessel diameter in implanted area</i>	2,76±1,1mm

Antiplatelet therapy:
Cardiomagnil – 75mg
Clopidogrel – 75mg

Primary endpoints:
MACE (death, MI, repeat revascularization)

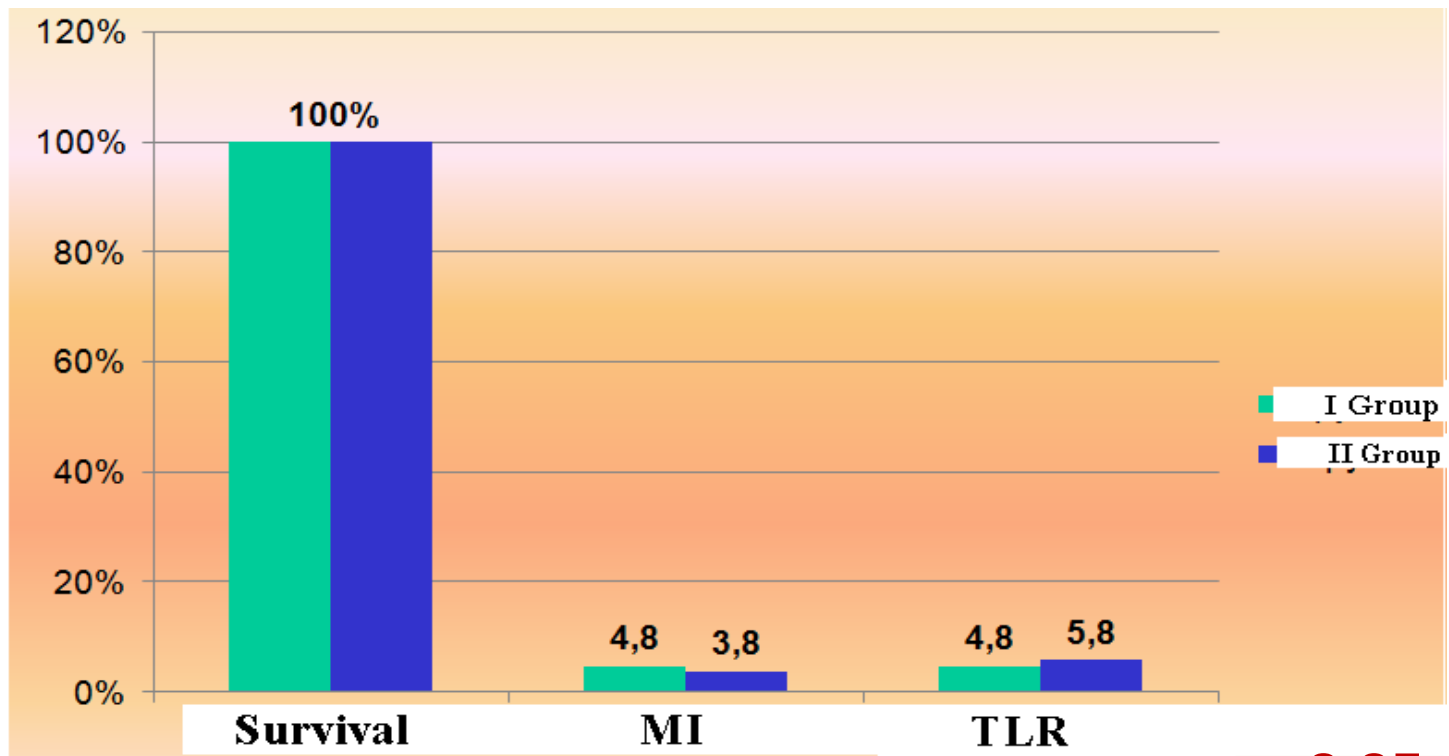
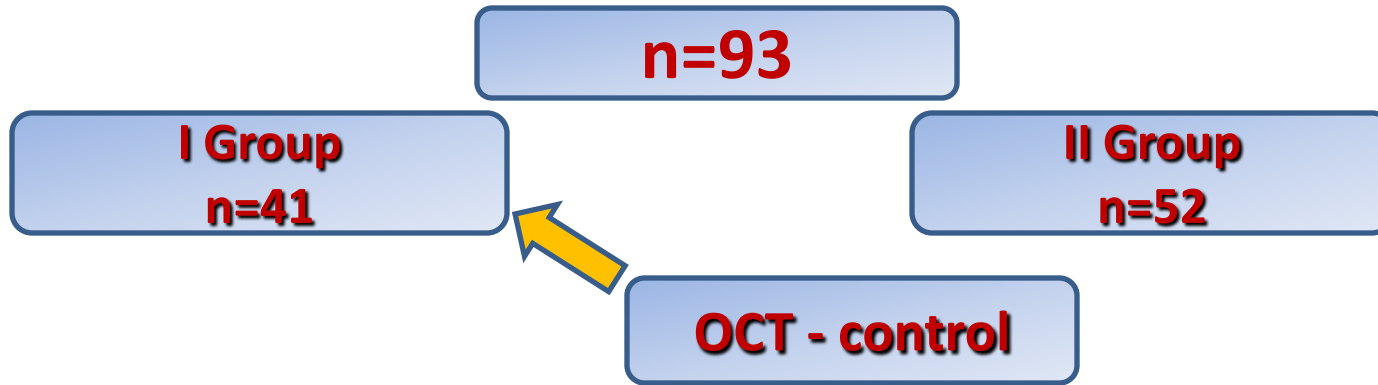
Long-term results:
Survival;
MACE (death, MI, TLR);
Late stent thrombosis.

Immediate results: MACE



$p > 0,05$

Long-term Results: 12 months



p>0,05

Conclusion

1. In patients suffering from Diabetes Mellitus with predominant lesions in mid and distal segments of coronary arteries, Bioabsorbable scaffolds proved equally effective and safe with Drug eluting stents with Everolimus.
2. 12 month is not enough to conclude, because the result of BVS will be able after 24 months, now we continue to our researches